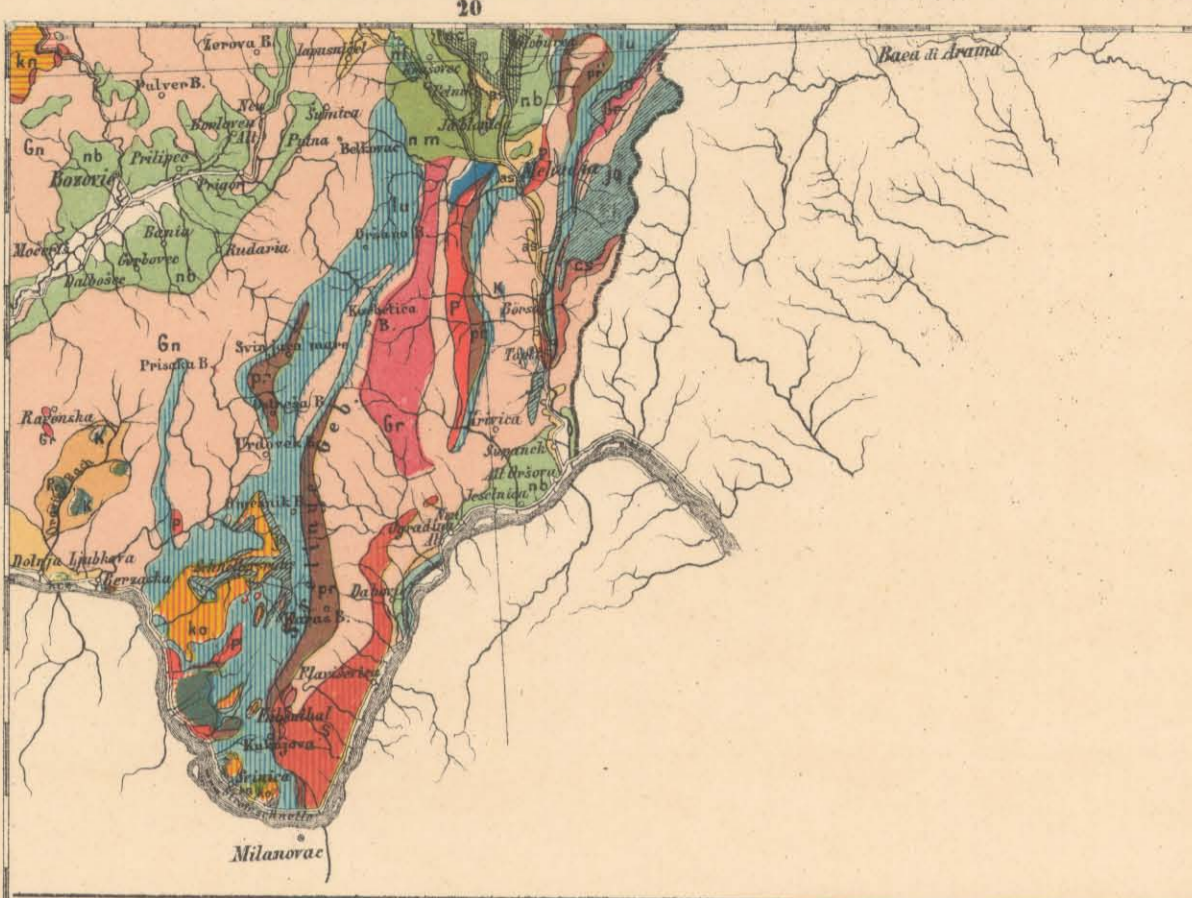


Geological legend listing various rock types and geological features such as Alluvium, Diluvium, Congerien-Schichten, Tertiar, etc.

Vertical legend with colored squares corresponding to geological units, labeled with letters like 'a', 'nb', 'nc', etc.



Main geological table with columns for regions: Nordalpen, Südalpen, Südostalpen, Centralkarpathen, Gebiet des Karpathen-Sandstein, Ungarisches Mittelgebirge, Inselgebirge, Banater-Siebenbürger Gebiet. Rows describe geological units and their stratigraphic positions.